

Sensors

TS...

Temperature Sensor

【Description】

TS... are to measure air or fluid temperature. It send signal to controller with two or three wires for air-condition control.

【Features】

High precision sensor can measure room, duct, or water pipe temperature. Good out looking and easy installation.

- Cover for duct and immersion type have IP65 protection.
- Direct line-out method is adopted.



【Specification】

Model	Type	Element	Ω at Temp	Sense Range	Apply Range	Accuracy	Protect
TSR2000A	Room	NTC,10K ohms	10KΩ@25 °C	-20 ~ 100 °C	0 ~ 50 °C	±0.25 °C@25 °C	IP30
TSD2025B	Duct	NTC,10K ohms	10KΩ@25 °C	-20 ~ 100 °C	0 ~ 80 °C	±0.25 °C@25 °C	IP65
TSW2010B	Immersion	NTC,10K ohms	10KΩ@25 °C	-20 ~ 100 °C	0 ~ 80 °C	±0.25 °C@25 °C	
TSW2015B	Immersion	NTC,10K ohms	10KΩ@25 °C	-20 ~ 100 °C	0 ~ 80 °C	±0.25 °C@25 °C	

Certificate: CE

Room Type

Cover : Plastic, Beige
 Base plate : Plastic, Beige
 Env. temp. : -5°C~55°C
 Env. Humidity : 10~95 % RH
 Weight : 95g

Duct Type

Top : Aluminum alloy,silver,φ35mm
 Pole : SS304,250mm
 Connector : PLUG-IN
 Env. temp. : -20°C~100°C
 Env. Humidity : 10~95 % RH
 Weight : 200g

Immersion Type

Top : Aluminum alloy,silver,φ35mm
 Pole : SS304,100mm
 Connector : PLUG-IN
 Env. temp. : -20°C~100°C
 Env. Humidity : 10~95 % RH
 Weight : 190g

【Accessories】

Model

Description

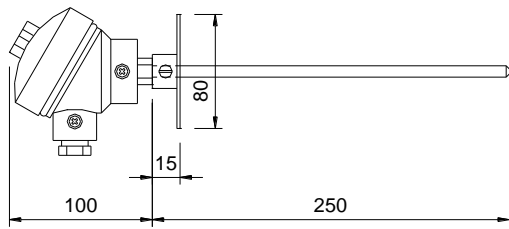
- ABK001** Mounting Brackets for duck work.
- AWL1008C-NPT** 1/2in Brass Well, NPT*8φ(inner dia.)*111mm length. (for TSW2010B)
- AWL1508C-NPT** 1/2in Brass Well, NPT*8φ(inner dia.)*161mm length. (for TSW2015B)
- AWL1008S-NPT** 1/2in Stainless Steel Well, NPT*8φ(inner dia.)*111mm length. (for TSW2010B)
- AWL1508S-NPT** 1/2in Stainless Steel Well, NPT*8φ(inner dia.)*161mm length. (for TSW2015B)
- QTP001** Plug-in type connector

【Installation】

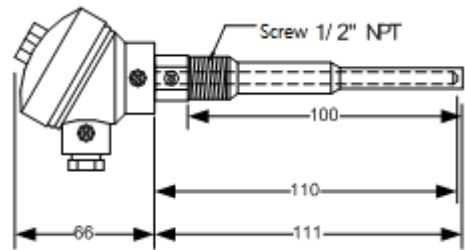
- Wall Mount-To be mounting on 1.2M above floor and good air current place, avoid heat radiation and vibration.
- Use metal pipe connector for duct and immersion type sensor to insure protect IP grade.
- Duct Mount-To be mounting at stable air current place or straight duct over 3-5 times diameter.
- Immersion-To be mounting at stable water current place, straight pipe over 3-5 times diameter or elbow.

NTC,10k ohms									
°C	Ω	°C	Ω	°C	Ω	°C	Ω	°C	Ω
-20	98,691								
-19	93,075	6	24,269	31	7,717	56	2,876	81	1,220
-18	87,814	7	23,100	32	7,397	57	2,773	82	1,181
-17	82,883	8	21,995	33	7,093	58	2,674	83	1,144
-16	78,260	9	20,949	34	6,802	59	2,579	84	1,109
-15	73,923	10	19,959	35	6,525	60	2,488	85	1,074
-14	69,853	11	19,022	36	6,261	61	2,400	86	1,041
-13	66,033	12	18,134	37	6,009	62	2,316	87	1,009
-12	62,445	13	17,292	38	5,769	63	2,235	88	978
-11	59,074	14	16,495	39	5,540	64	2,158	89	949
-10	55,905	15	15,739	40	5,321	65	2,084	90	920
-9	52,926	16	15,022	41	5,111	66	1,012	91	892
-8	50,124	17	14,342	42	4,911	67	1,944	92	866
-7	47,487	18	13,696	43	4,721	68	1,878	93	840
-6	45,005	19	13,084	44	4,538	69	1,815	94	815
-5	42,668	20	12,502	45	4,364	70	1,754	95	791
-4	40,466	21	11,949	46	4,197	71	1,695	96	768
-3	38,391	22	11,424	47	4,037	72	1,639	97	745
-2	36,436	23	10,925	48	3,885	73	1,585	98	724
-1	34,591	24	10,451	49	3,739	74	1,533	99	703
0	32,851	25	10,000	50	3,599	75	1,483	100	683
1	31,209	26	9,571	51	3,465	76	1,435	101	663
2	29,658	27	9,163	52	3,337	77	1,388	102	644
3	28,194	28	8,774	53	3,214	78	1,344	103	626
4	26,811	29	8,404	54	3,097	79	1,301	104	608
5	25,504	30	8,052	55	2,984	80	1,260	105	591

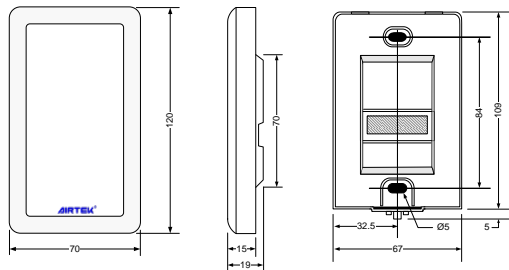
【Dimension】 Unit : mm



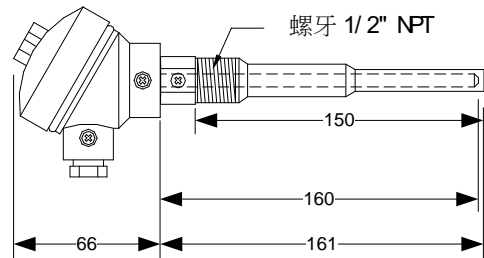
Duct Type



Immersion TSW2010B



Room Type



Immersion TSW2015B

Above information is for this product. We reserve the right to alter this information without notice